

# Event 5800



## High Capacity Bidirectional Studio Transmitter Link

# STL/TSL: Get the payload advantages...



Event 5800 Indoor Unit

The Moseley Event 5800 is a carrier class T1/E1/IP Ethernet radio link. The Starlink SL9003T1 combined with the Event 5800 creates a high capacity bidirectional STL/TSL.

## TAKE ADVANTAGE OF HIGH PAYLOAD CAPACITY

Moseley Event 5800 provides up to nine bidirectional T1 or eight E1 circuits. Multi-station clusters can transport linear uncompressed 20 kHz digital audio for a truly cost effective multi-station Studio Transmitter Link.

Event 5800 is fully bidirectional. This means audio from remote pickup equipment, and satellite delivered programming can be transported inbound from the transmitter site over the same link.

## HD RADIO™ READY TODAY

Event 5800 meets all the requirements for IBOC digital radio. Event 5800 transports AES/EBU digital uncompressed audio at 44.1 or 32 kHz sample rates along with Ethernet data to provide all the signals necessary for the HD1, HD2, HD3 multicasting, and datacasting services. With Event, stations get the most out of HD Radio™ conversion now and in the future.

## LEVERAGE LATEST ADVANCES IN IP TECHNOLOGY

New and innovative IP based applications and appliances can promote station efficiency. The Event 5800 provides an Ethernet channel to extend the station IP LAN/WAN network the transmitter site.

Surveillance and security cameras, IP transmitter site monitoring and remote control reduce down-time and protect valuable station assets. Sites can be accessed remotely and over the Internet saving personnel travel time to the site.

Mirrored servers located at transmitter sites can back up business records and programming content off-site. In the case of an evacuation or disaster at the studio building, stations get back on the air quickly from temporary facilities. Email and Internet connections at transmitter sites save engineers time accessing manuals or help from manufacturers during a maintenance session.

## INTELLIGENT SYSTEM DESIGN

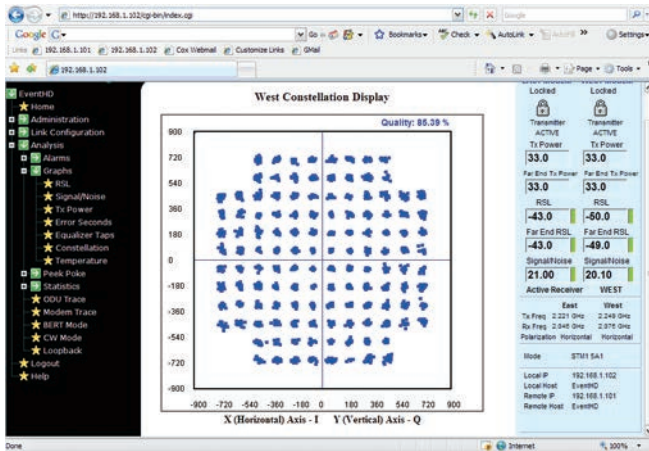
Event 5800 consists of a Software Defined Indoor Unit and an Outdoor Unit. The Event 5800 radios are spectrum and data rate scalable, which enables broadcasters to have greater flexibility in STL planning and future growth. The integrated T1/E1 and Ethernet interfaces allow for a combination of T1/E1 and IP packet data.

## QUICK DEPLOYMENT

Event 5800 operates in the ISM 5.8 GHz and U-NII 5.3 GHz unlicensed bands. The overcrowded 950 MHz licensed STL band can be avoided. Time consuming frequency coordination and licensing costs and delays are not required. A new STL system can be up and running quickly and cost effectively.

## CARRIER CLASS TRANSPORT

- Distances 20 miles or greater
- External High Gain Antenna
- ISM 5.8 GHz unlicensed band
- U-NII 5.3 GHz unlicensed band
- Adaptive Power Control
- Powerful Reed-Solomon Error Correction
- 1+1, 2+0 Redundancy
- Advanced diagnostics



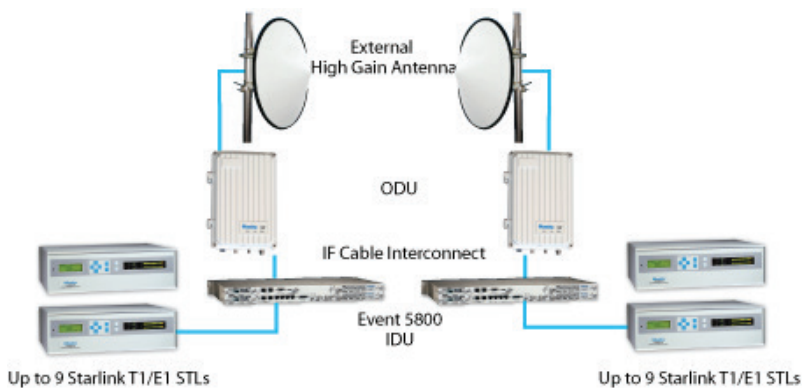
Web-based Interface

### EXCELLENT RETURN ON INVESTMENT

Event 5800 eliminates multiple leased audio, voice and data lines to and from transmitter sites. This results in significant savings in monthly recurring costs. So, in addition to providing the highest quality STL possible, Event 5800 pays for itself in a very short time.

### SOPHISTICATED NETWORK MANAGEMENT

The Event 5800 provides superior Network Management capability with its built-in Web Server and SNMP software. Unmatched system analysis and monitoring can be utilized to create multi-level system alarms. Remote monitoring and control of your entire microwave network is simplified. System security is paramount; the Event 5800 features multi-level configuration permissions and network data encryption. Accounting and logging features provide protection and information about access attempts.



### HIGH PAYLOAD CAPACITY

- *Multi-station clusters*
- *HD Radio™ and Multicasting*
- *LAN/WAN extension to site*
- *Backhaul RPU and SAT downlink*

### UNEQUALLED AUDIO PERFORMANCE

- *Linear uncompressed audio*
- *HD Radio™ & Multicasting*
- *AES/EBU Digital or Analog (L+R) inputs & outputs*
- *32, 44.1, or 48 kHz sample rates*
- *Low delay*
- *Built in RS-232 data channels*

### UNPARALLELED ROBUSTNESS

To overcome industrial and other man-made impulse noise as well as other burst-mode interferences, powerful Reed-Solomon and Trellis-Coded Error Correction is standard. Unfaded BER error-free performance in excess of 10-12 is unparalleled.

An interleaver further enhances error concealment. In addition, an adaptive equalizer overcomes multipath and other channel impairments.

MOSELEY ASSOCIATES IS THE LEADER IN DIGITAL STL TRANSMISSION SYSTEMS FOR THE BROADCASTING INDUSTRY. FOR MORE INFORMATION VISIT US AT [www.moseleysb.com](http://www.moseleysb.com).

...of digital T1/E1 in an RF microwave STL.

# Event 5800

## RF SPECIFICATIONS

<b>FREQUENCY RANGE</b>	ISM: 5.725 - 5.850 MHz U-NII: 5.250 - 5.350 MHz
<b>CAPACITY OPTIONS</b>	T1: up to 9 E1: up to 8 Ethernet: 27 Mbps Capacity also includes additional 1 Mbps full duplex Ethernet capacity for NMS traffic
<b>AVERAGE OUTPUT POWER</b>	ISM +5 to +23 dBm U-NII -18 to +5 dBm
<b>RECEIVE SENSITIVITY</b>	-84 dBm to -80 dBm (E1/T1) -84 dBm to -70 dBm (Ethernet) Receiver sensitivity varies per selected frequency and modulation
<b>ANTENNA ANTENNA CONNECTOR REGULATORY POWER</b>	Uses external antenna for higher gain N-Type Female FCC Part 15 IC: RSS210 -48 Volts $\pm$ 10%, <70 Watts; Optional 100-240 Volts AC, 47-63 Hz power supply
<b>OPTIONAL FEATURES</b>	Integrated cross connect for E1/T1; add / drop mux for SDH; single chassis 1+1, 2+0 option.

## NETWORK MANAGEMENT

- Supports SNMP
- Built-in web server
- Connector RJ-45
- 10/100BaseTX

## DATA INTERFACE

<b>PHYSICAL</b>	Ethernet - 100BaseTX
<b>CONNECTOR</b>	N x E1/T1 - Full duplex E1/T1 Ethernet RJ-45 N x E1/T1 2 x RJ-48C, HD60

## OPERATING FEATURES

<b>WAYSIDE CHANNELS</b>	T1/E1
<b>INTERFACE</b>	DSX-1 Connector RJ-48C
<b>ALARM PORT</b>	Two Form C relay alarm outputs, 2 TTL outputs
<b>VOICE SERVICE CHANNEL</b>	6-wire, PTT handset
<b>DATA SERVICE CHANNEL</b>	64 kbps

## ENVIRONMENTAL CHARACTERISTICS

<b>COMPLIANCE</b>	Ethernet IEEE 802.3
-------------------	---------------------

	IDU	ODU
<b>TEMPERATURE</b>	-5° to 55°C	-30° to 55°C
<b>RELATIVE HUMIDITY</b>	0 to 95%, non-condensing	Up to 100% at 45°C
<b>ALTITUDE</b>	4500 meters	4500 meters
<b>SIZE</b>	1RU, ETSI compliant, (445 x 238.5 x 44.5m) rack mount (19 inches, 48.2 cm)	39.5 x 36.5 x 5.5 cm
<b>WEIGHT</b>	7 lbs.	15 lbs.

## COMMON CONFIGURATIONS

Build your station's perfect mix of T1/E1 and Ethernet payload, for example:

- 9 T1 circuits and 5 MBPS Ethernet data
- 5 E1 circuits and 10 MBPS Ethernet data
- 3 E1 circuits and 15 MBPS Ethernet data

The Moseley sales team can custom configure your Event 5800.



The Starlink SL9003T1 combined with the Event 5800 creates a high capacity bidirectional STL/TSL.